

ACCOMMODATIONS SYMBOL LEGEND

- ★ Twin Beds do not convert to a King Bed
- ▶ King Bed does not convert to Twin Beds
- ★ 2 Twin Beds (convert to King) and Single Sofa Bed
- 2 Twin Beds (convert to King) and 1 Upper Pullman
- ✱ 2 Twin Beds (convert to King) and 1 Upper Pullman (Beds do not convert to King when Pullman in use)
- 2 Twin Beds (convert to King), Single Sofa Bed and 1 Upper Pullman
- † 2 Twin Beds (convert to King) and Double Sofa Bed
- 2 Twin Beds (convert to King) and 2 Upper Pullmans

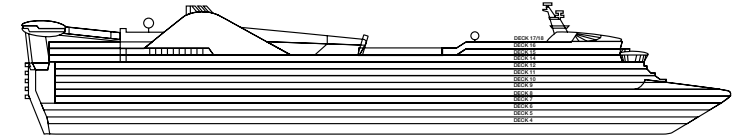
- = 2 Twin Beds (convert to King), Single Sofa Bed with Convertible Bunk
 - ↔ King Bed (does not convert to Twin Beds) and Double Sofa Bed
 - ✱ 2 Twin Beds (convert to King) and 2 Upper Pullmans (Beds do not convert to King when Pullmans in use)
 - ◁ Connecting staterooms (ideal for families and groups of friends)
 - 🚭 All accommodations are non-smoking.
- Stateroom features and layouts may vary. Deck plan is subject to change.

Accessible staterooms are available for guests with disabilities. For details, please contact: **For US guests:** Call Guest Access Services at 1-800-438-6744 ext. 70025, or visit <https://www.carnival.com/about-carnival/special-needs>
For Australia and New Zealand guests: Call the Carnival Reservations Department, Guest Services: Australia 13 31 94; New Zealand 0800 442 095.

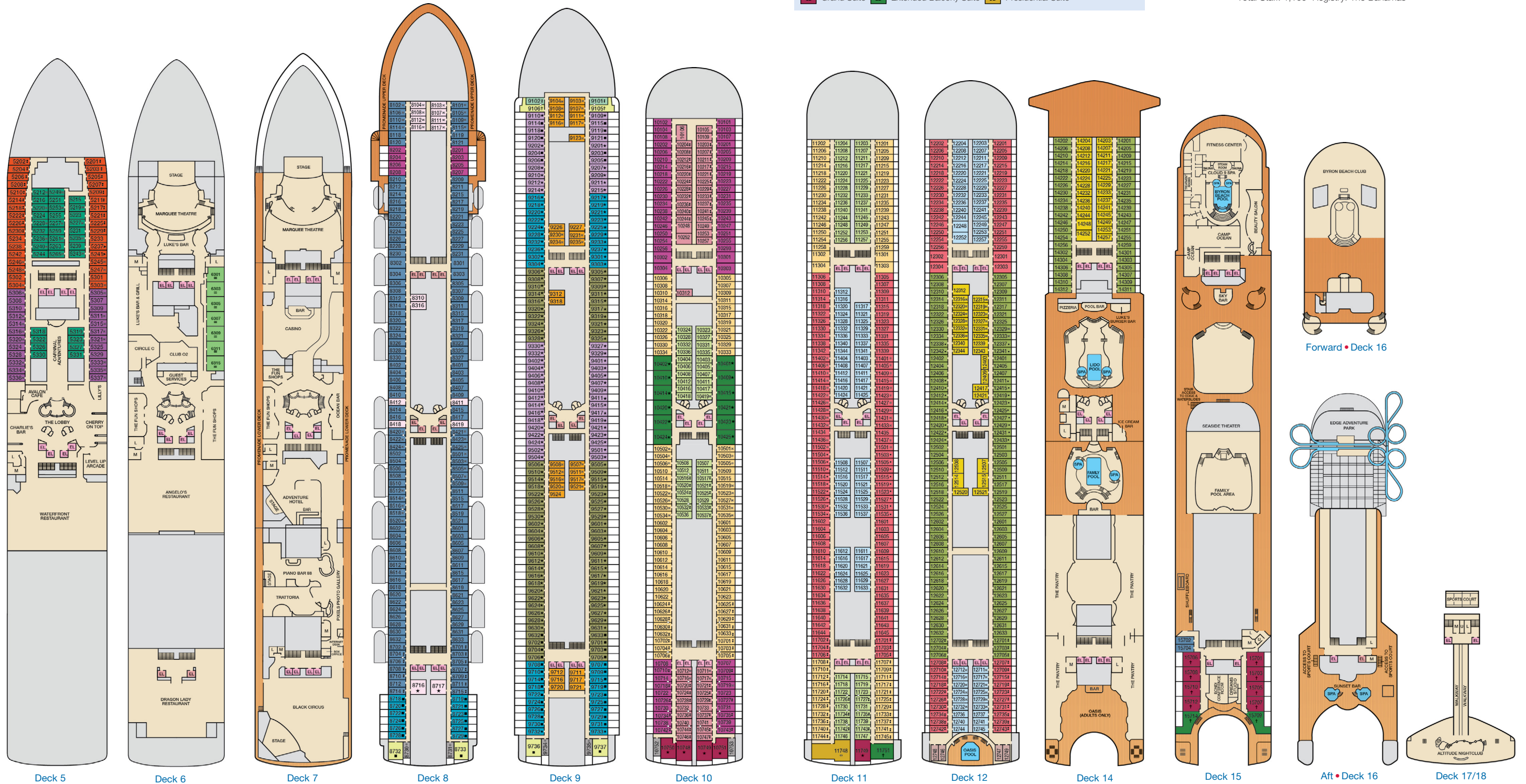
CATEGORIES

- PT Porthole
- 4A 4B 4C 4D 4E 4F 4G 4H Interior
- 5A Ocean View (obstructed views)
- 6A 6B Ocean View
- 8A 8B 8C 8D Balcony
- 8M Aft-View Extended Balcony
- OS 01 Ocean Suite
- BY Ocean View Suite
- BY Ocean Suite
- VB Vista Suite
- GB Grand Suite
- EB Extended Balcony Suite
- SB Presidential Suite

Byron Beach Accommodations: BV Ocean View Suite BY Ocean Suite VB Vista Suite



Gross Tonnage: 108,865 Length: 951 Feet Beam: 118 Feet
 Cruising Speed: 20 Knots Guest Capacity: 2,636 (Double Occupancy)
 Total Staff: 1,100 Registry: The Bahamas



CARNIVAL ADVENTURE™

ACCOMMODATIONS SYMBOL LEGEND

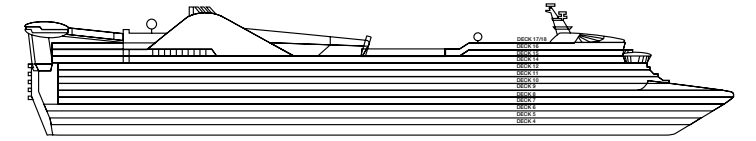
- * Twin Beds do not convert to a King Bed
- ▲ King Bed does not convert to Twin Beds
- ★ 2 Twin Beds (convert to King) and Single Sofa Bed
- 2 Twin Beds (convert to King) and 1 Upper Pullman
- ✱ 2 Twin Beds (convert to King) and 1 Upper Pullman (Beds do not convert to King when Pullman in use)
- 2 Twin Beds (convert to King), Single Sofa Bed and 1 Upper Pullman
- † 2 Twin Beds (convert to King) and Double Sofa Bed

- 2 Twin Beds (convert to King) and 2 Upper Pullmans
- ▬ 2 Twin Beds (convert to King), Single Sofa Bed with Convertible Bunk
- ↔ King Bed (does not convert to Twin Beds) and Double Sofa Bed
- ✳ 2 Twin Beds (convert to King) and 2 Upper Pullmans (Beds do not convert to King when Pullmans in use)
- △ Connecting staterooms (ideal for families and groups of friends)
- 🚭 All accommodations are non-smoking.

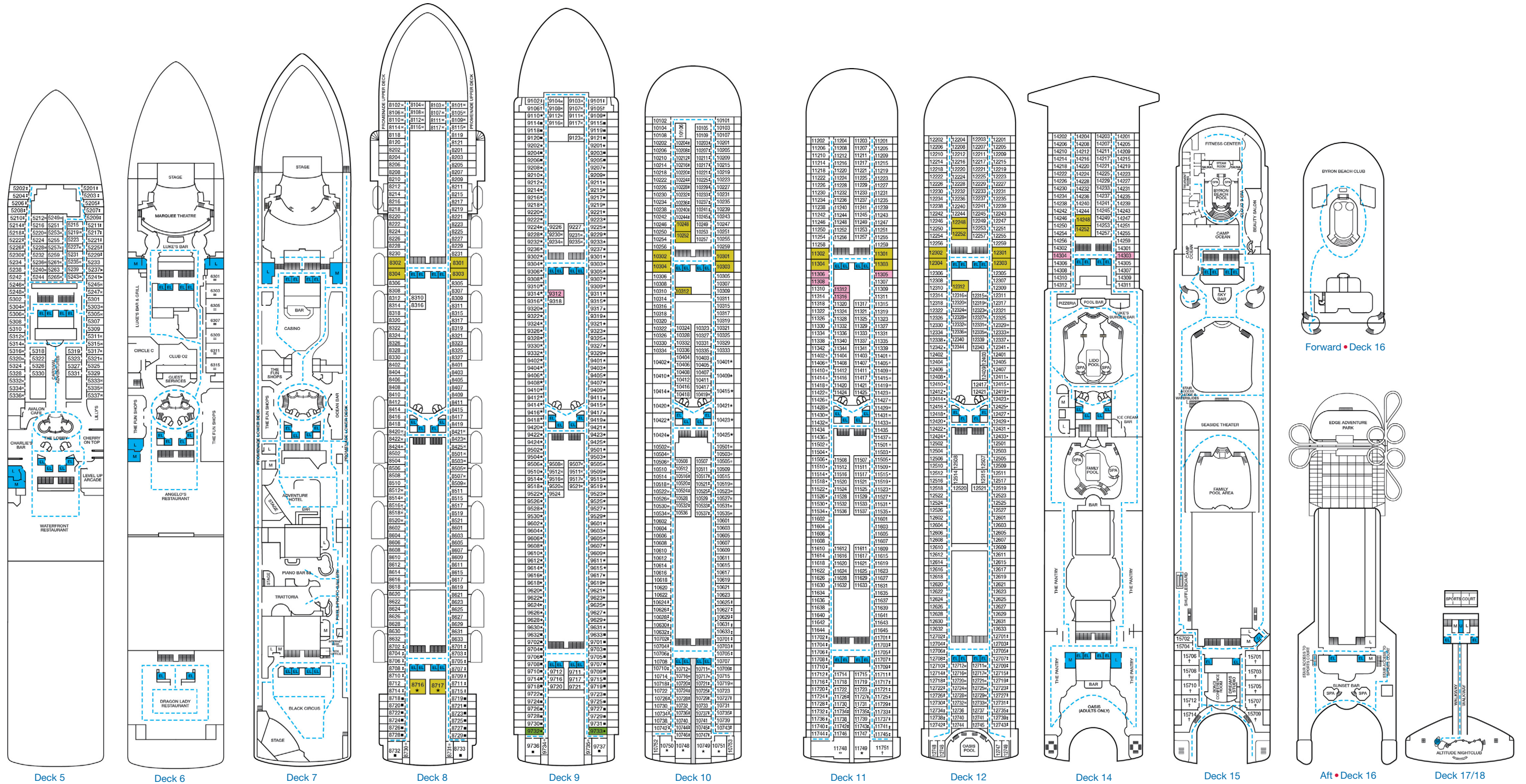
- Accessible Routes including Ramps
 - Restrooms, Elevators, Lifts and other Accessible Areas
 - Fully Accessible Staterooms (FAC)
 - Fully Accessible Staterooms - Single Side Approach (FAC-SSA)
 - Ambulatory Accessible Staterooms (AAC)
- Stateroom features and layouts may vary. Deck plans subject to change.

DECK PLANS

For specific ship accessibility features, please contact:
For US guests: Call Guest Access Services at 1-800-438-6744 ext. 70025, or visit <https://www.carnival.com/about-carnival/special-needs>
For Australia and New Zealand guests: Call the Carnival Reservations Department, Guest Services: Australia 13 31 94; New Zealand 0800 442 095.



Gross Tonnage: 108,865 Length: 951 Feet Beam: 118 Feet
 Cruising Speed: 20 Knots Guest Capacity: 2,636 (Double Occupancy)
 Total Staff: 1,100 Registry: The Bahamas



Deck 5 Deck 6 Deck 7 Deck 8 Deck 9 Deck 10 Deck 11 Deck 12 Deck 14 Deck 15 Forward • Deck 16 Aft • Deck 16 Deck 17/18